



Scan to see website

KRT-4-M-V

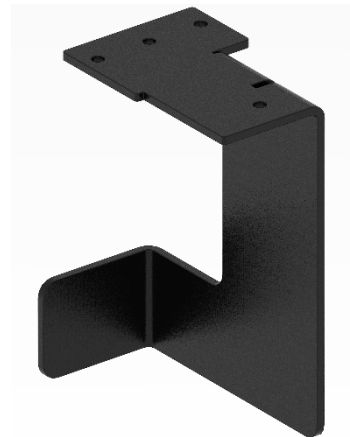
Quick Start Guide

This guide helps you install and use your **KRT-4-M-V** for the first time.

Go to <http://www.kramerav.com/downloads/KRT-4-M-V>, to download the latest user manual and check if firmware upgrades are available.

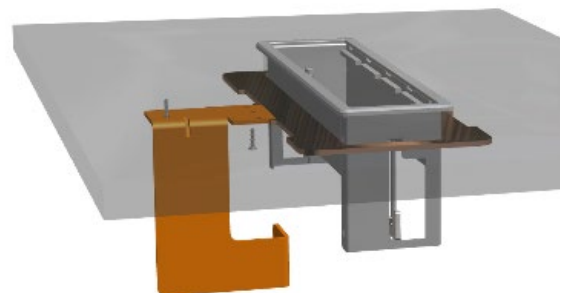
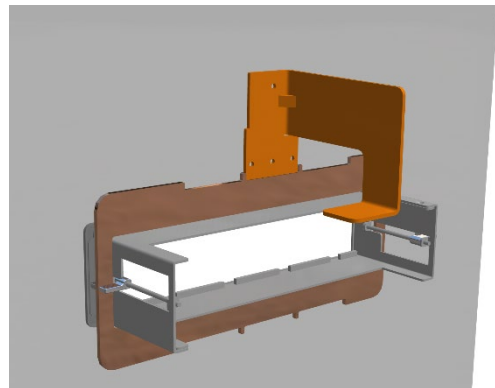
Step 1: Check What's in the Box

- ✓ KRT-4-M-V Vertical Mounting Bracket for Retractor KRT-4.
- ✓ Quick Start Guide



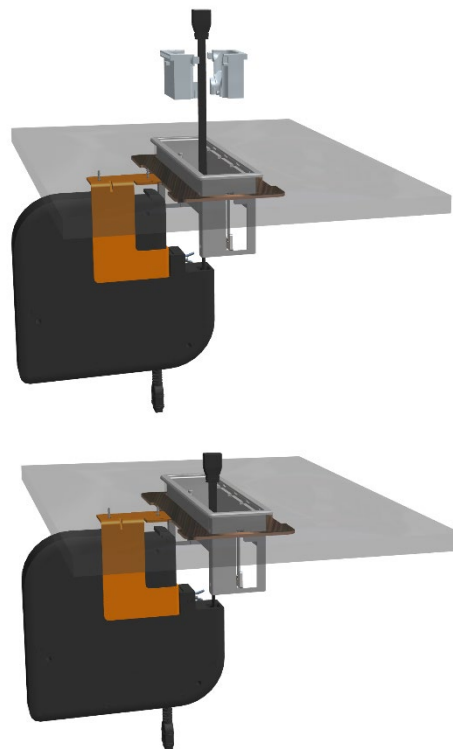
Step 2: Position and Secure Bracket to Table

1. Position the KRT-4-M-V according to the marked slot in the Retractor Template.
2. Secure the KRT-4-M-V to the underside of the table with two screws.



Step 3: Retractor Cable Pass-through for KRT-4

1. Pull out about 1 meter / 3 ft cable from the retractor.
2. Pass the cable through the KRT-4 frame and the MCP-3 from under the table.



Step 4: Connect Retractor to Bracket

1. Position the retractor to the bracket and secure with the butterfly screw.

